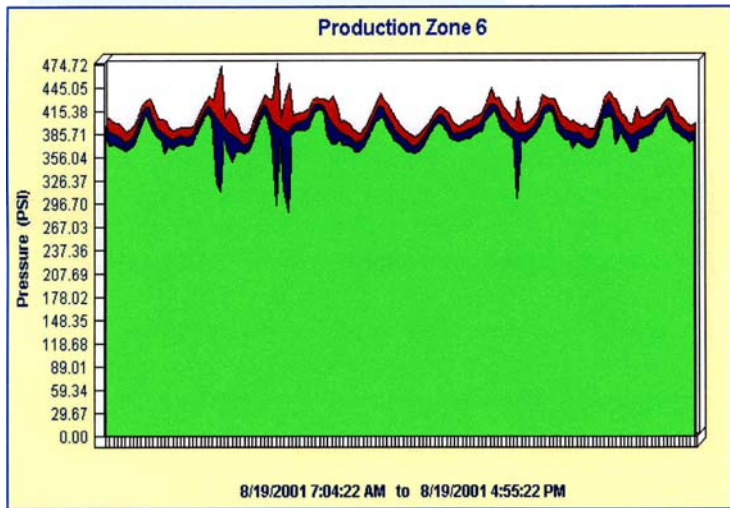


Meter-Master

Model 100XP Pressure Recorder



DESCRIPTION

The portable Meter-Master Model 100XP Pressure Recorder records static pressure over time. A rocker switch toggles the recording on/off. The current pressure may be checked at any time without interrupting a recording session using the Model 100 Program's Realtime Display. The Model 100XP has a large memory and uses extremely reliable and accurate pressure sensors in a variety of ranges from 0-5 PSI to 0-30,000 PSI.

The Model 100 Program software provides a variety of report and graph options. Data may easily be exported into widely used software such as Excel® and Word®. The program supports PSI, Bars, Feet, Metres, and Kilopascals. Additional units of measure may be added to the database.

The pressure sensor is located external to the recorder in order to allow for the wide variety of pressure ranges. The sensor has a standard stainless steel 1/4" NPT fitting but is available with any pipe fitting desired. The sensor cable includes a military style connector for connecting the sensor to the cable. All connectors on the recorder are stainless steel. The sensors are designed for nonsubmersed applications.



FEATURES

- **Quick/Easy Setup**
- **Portable**
- **Rugged**
- **Wide Sensor Range**
- **High Resolution**
- **Securable**
- **Electronic Data**
- **Temp. Compensated**
- **Large Memory**

APPLICATIONS

- **Customer Service**
- **Pressure Complaints**
- **Hydraulic Modeling**
- **Hydrant Evaluation**
- **Valve Evaluation**
- **Pressure Management**
- **Pressure Monitoring**
- **Pressure Testing**
- **Leakage Control**

Specifications on page 2 ...

MODEL 100XP SPECIFICATIONS

- **Size:** 8.6" x 5.4" x 2.1" (225 mm x 139 mm x 54 mm).
- **Weight** (including internal batteries; excluding cable and sensor): 3.75 lbs. (1.7 kg).
- **Portable Electronic Recorder:** No moving parts or charts.
- **Pressure Sensor:** Ranges from 0-5 to 0-30,000 psi. See ordering information below for options. Sensor has 1/4" NPT male fitting (alternate fittings available as options - specify with order).
- **Detachable 6' External Electrical Cable** for connection to the pressure sensor.
- **Easy-to-Use On/Off Rocker Switch** to toggle recording on/off.
- **LED Signal Light** integral to rocker switch indicates power on.
- **Realtime Display** shows current pressure on your computer.
- **Computer, Minimum Requirements:** receptacle for RS232 cable (9 pin); Windows (3.1, 3.11, 95, 98, 2000, ME, XP or NT); Pentium processor; 16MB RAM; 100MB free hard disk space. (Program files use 12MB of hard disk space; swap space plus real memory should be at least 30MB.)
- **Durable ABS/Polycarbonate Case** with integral handle to chain unit for security.
- **Variable Data Storage Interval:** 5 interval settings: 1, 5, 10, 30, and 60 seconds.
- **Data Storage Capacity:** 260,000+ intervals. Provides the following recording periods: 1 sec. interval = 3 days; 5 sec. = 15 days; 10 sec. = 30 days; 30 sec. = 90 days; 60 sec. = 180 days. Recording stops when memory is full; no overwriting.
- **Pressure Offset to Account for Current Atmospheric Pressure:** Zero pressure set in field by depressing rocker switch for 20 seconds or by software command.
- **Capacity to Make 20 Records:** Recording can be started/stopped 20 times before downloading.
- **Standard Units Of Measure:** PSI, Feet, Metres, Bars, Kilopascals. Additional units may be added to the database.
- **Temperature Compensation** of sensor is calibrated under environmental conditions at the factory.
- **Resolution:** 4 significant digits (psi).
- **Pressure Media:** Materials compatible titanium.
- **Accuracy, Combined Non-Linearity/Hysteresis:** $\pm 0.25\%$ of full scale.
- **Repeatability:** $\pm 0.1\%$ of full scale.
- **Long Term Stability:** $\pm 0.2\%$ of full scale.
- **Media Temperature:** -50° to 120° C maximum.
- **Ambient Temperature:** -40° to 80° C maximum.
- **Temperature Effect Zero and Span:** $\pm 0.03\%$ $^{\circ}$ C.
- **Humidity (standard sensor):** $\pm 95\%$ relative humidity.
- **External Battery or AC Operation** for extended recording time.
- **Internal Power:** 2 rechargeable lead-acid, 2 volt, 5 amp hour batteries. Internal battery life (approx.): 3+ months. Relief valve allows gases to escape when overcharging occurs.
- **Low Battery Power-Down:** Automatically stops recording and powers-down when battery is low to preserve recorded data and avoid battery damage.
- **Overnight (14 hours) Battery Charging.**
- **Two Year Warranty.**

ORDERING INFORMATION

Model Number 100XP/_

PSI pressure range (see chart) _____

Example: Model 100XP with 0-10,000 psi sensor = Model 100XP/M

Unit of measure conversion factors: 1 psi = 0.0690 bars = 2.310 feet = 0.704 metres = 6.895 kilopascals

Model 100 Program Software supports all units of measure

all in psi 0 to:	A	B	C	D	E	F	G	H	I	J	K	L	M	N	O	P
	5	15	30	50	100	200	300	500	1000	3000	5000	7500	10,000	15,000	20,000	30,000



F.S. Brainard & Company

5 Terri Lane • P.O. Box 366 • Burlington • New Jersey • 08016 • USA
Phone 888-388-FLOW or 609-387-4300 • Fax 609-387-4304

Email sales@meter-master.com

www.meter-master.com