

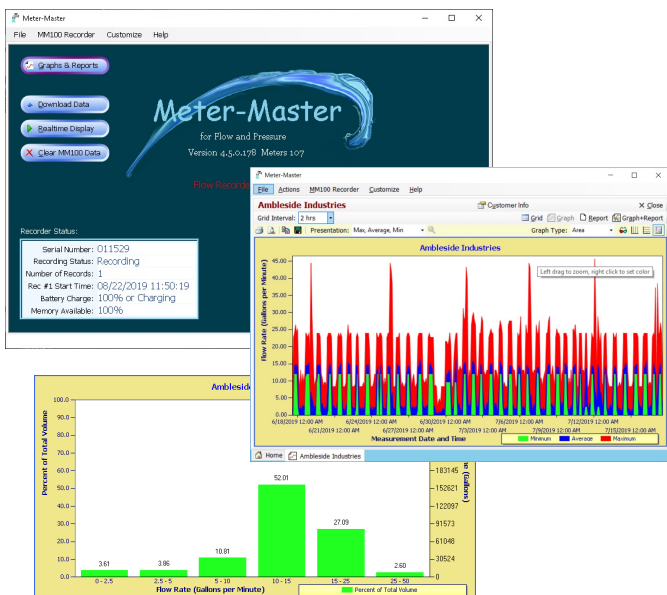
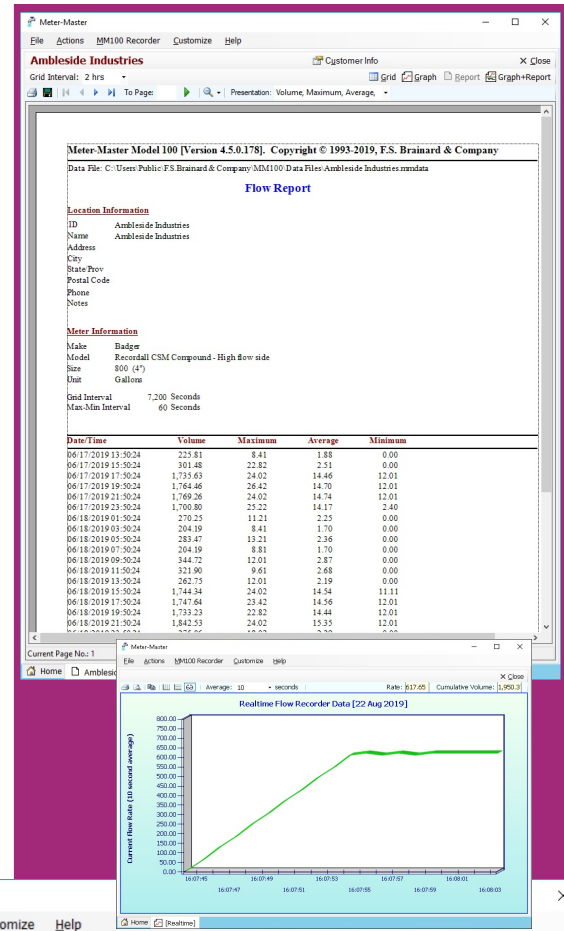
The Model 100 Program Interfaces With All Model 100 Hardware Products

DESCRIPTION

The Model 100 Program software is compatible with all versions of Windows and interfaces via a USB/RS232 cable with the Model 100EL & 100AF Flow Recorders and the Model 100P & 100XP Pressure Recorders. The software performs all recorder interface functions including initialization, downloading, and displaying current values using the Realtime Display. The data is compatible with the MeterSizer software accessory which uses the raw flow data to perform its sizing analyses.

Once flow or pressure data has been downloaded, the Model 100 Program provides for various graph and report options, all of which can easily be converted into Word, Excel, and other third party file formats. Although the data storage intervals range from 1 to 60 seconds, reports and graphs can be created using any resolution levels desired. Similarly, the start and end dates and times of reports and graphs can easily be modified to any dates and times within the recording period. This enables you to zoom in on specific events and timeframes and to create reports and graphs for required timeframes, such as hourly consumption data with each hour's data matching clock hours.

Flow graphs and reports include volume, maximum/average/minimum rates, and rate vs. volume options. Pressure reports and graphs include average and maximum/average/minimum. The Model 100 Program database includes in excess of 2,500 preprogrammed water meter and pressure range options in order to simplify operation. The substantial water meter database enables the user to verify data accuracy by comparing the volume used per the register with the volume calculated by the software. The best thing about the Model 100 Program is that it is custom designed for these specific applications so that operation can be both simple and powerful.



Row	Date/Time	Volume	Maximum	Average	Minimum
1	6/17/2019 01:50:24 PM	225.812	8.408	1.882	0.000
2	6/17/2019 03:50:24 PM	301.483	22.821	2.512	0.000
3	6/17/2019 05:50:24 PM	1735.631	24.023	14.464	12.011
4	6/17/2019 07:50:24 PM	1764.459	26.425	14.704	12.011
5	6/17/2019 09:50:24 PM	1769.263	24.023	14.744	12.011
6	6/17/2019 11:50:24 PM	1700.799	25.224	14.173	2.402
7	6/18/2019 01:50:24 AM	270.254	11.211	2.252	0.000
8	6/18/2019 03:50:24 AM	204.192	8.408	1.702	0.000
9	6/18/2019 05:50:24 AM	283.466	13.212	2.362	0.000
10	6/18/2019 07:50:24 AM	204.192	8.808	1.702	0.000
11	6/18/2019 09:50:24 AM	344.724	12.011	2.873	0.000
12	6/18/2019 11:50:24 AM	321.903	9.609	2.683	0.000
13	6/18/2019 01:50:24 PM	262.747	12.011	2.190	0.000
14	6/18/2019 03:50:24 PM	1744.340	24.023	14.536	11.110
15	6/18/2019 05:50:24 PM	1747.643	23.422	14.564	12.011



F.S. Brainard & Company

5 Terri Lane • P.O. Box 366 • Burlington • New Jersey • 08016 • USA

Phone 888-388-FLOW or 609-387-4300 • Fax 609-387-4304

Email sales@meter-master.com

www.meter-master.com